



Perspective of the Entrance Promenade



Perspective of the Atrium Promenade

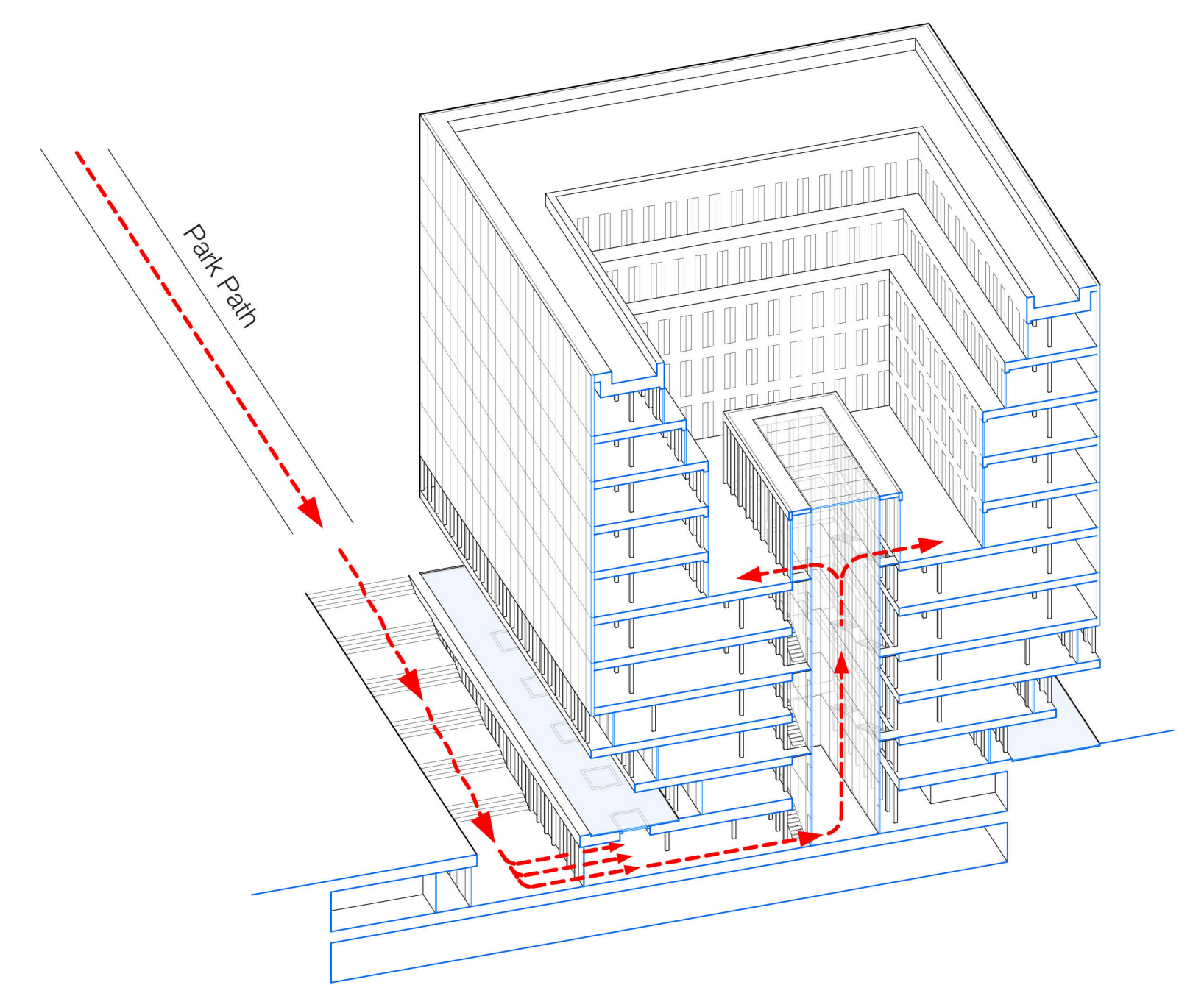
Concept of NUOVA BEIC

As it appears from the study of the City of Milan and Politecnico di Milano on the future of this place, this project will focus on the construction of "temples of culture" in the center of the green area, which is more than 1 km wide.

Three conditions, firstly the importance of the site in the city's history, secondly the unusually large green area and finally the important role of the site, mark the project site as one of three sites in Milan that are deeply integrated into the fabric of the city and constitute its identity, following the Duomo of Milan in the city center and the Castello Sforzesco in the northwest.

Like the Duomo of Milan and the Castello Sforzesco, this library should be neither a mere part of its surroundings nor a part of the rest of the urban context, but sui generis, based on a self-sufficient clarity and highly developed autonomy.

Because these objects are 1. symbols of the city, 2 cores of the complicated urban development and moreover 3. points of view from which we should recognize the immense size of urban spaces.



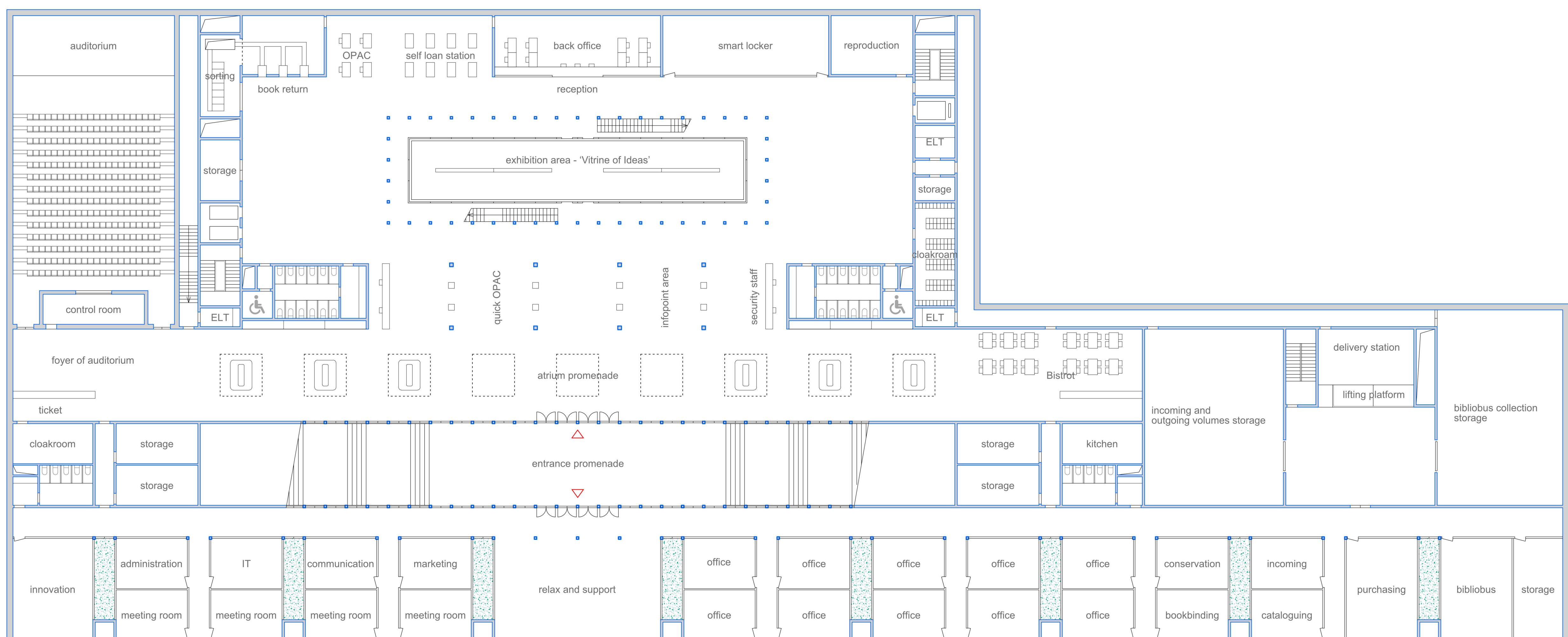
Circulation Concept

In order to meet the urban planning objective, the volume of the new library radically and simply emphasizes the contrast between surface and line, and is therefore designed to be very visible from a distance.

The exchange of knowledge and information takes place without borders, and the most important social activity today is to give everyone the opportunity to freely communicate their ideas.

So the library has not just remained a library, but now provides the space where the different ideas are explored and communicated.

This library is designed to go beyond the traditional image of the library and encourage the expression and exchange of ideas.



Lower Level 1 - Entrance Hall & Office 1:200