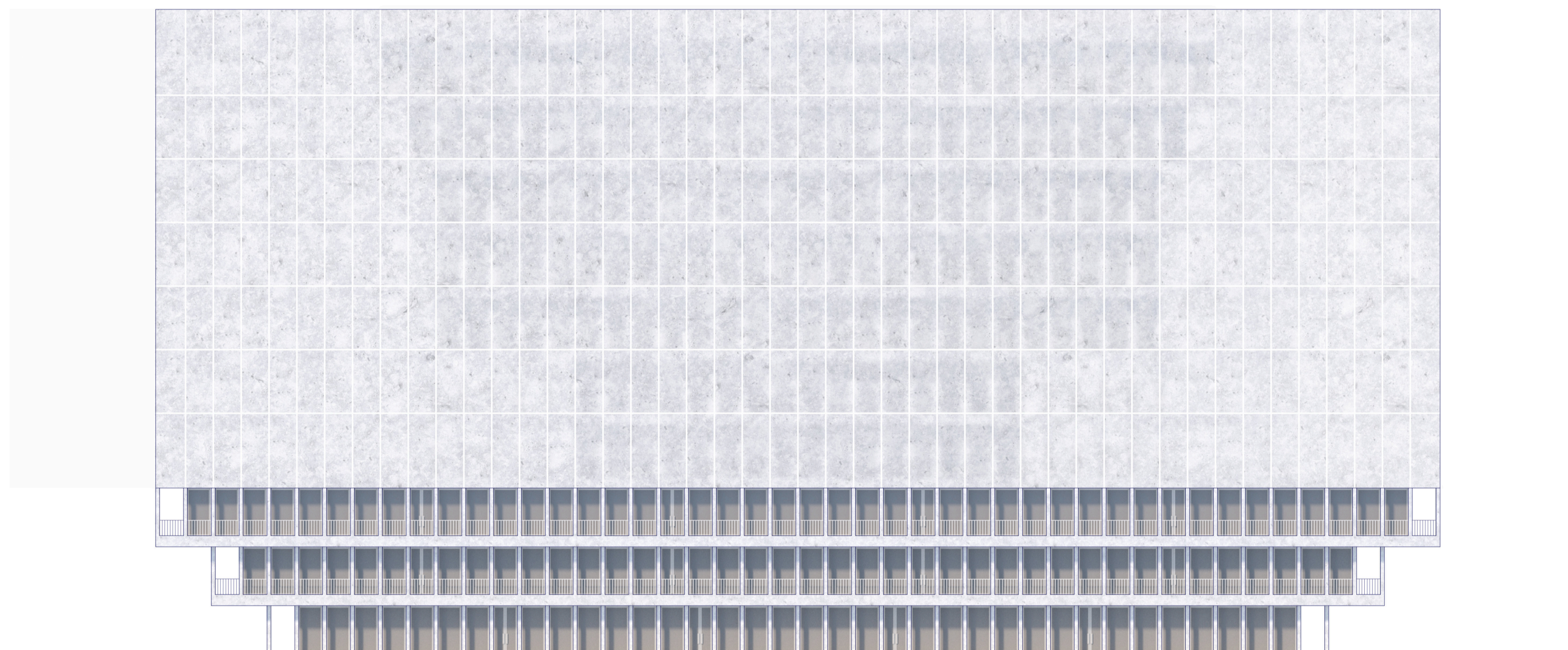




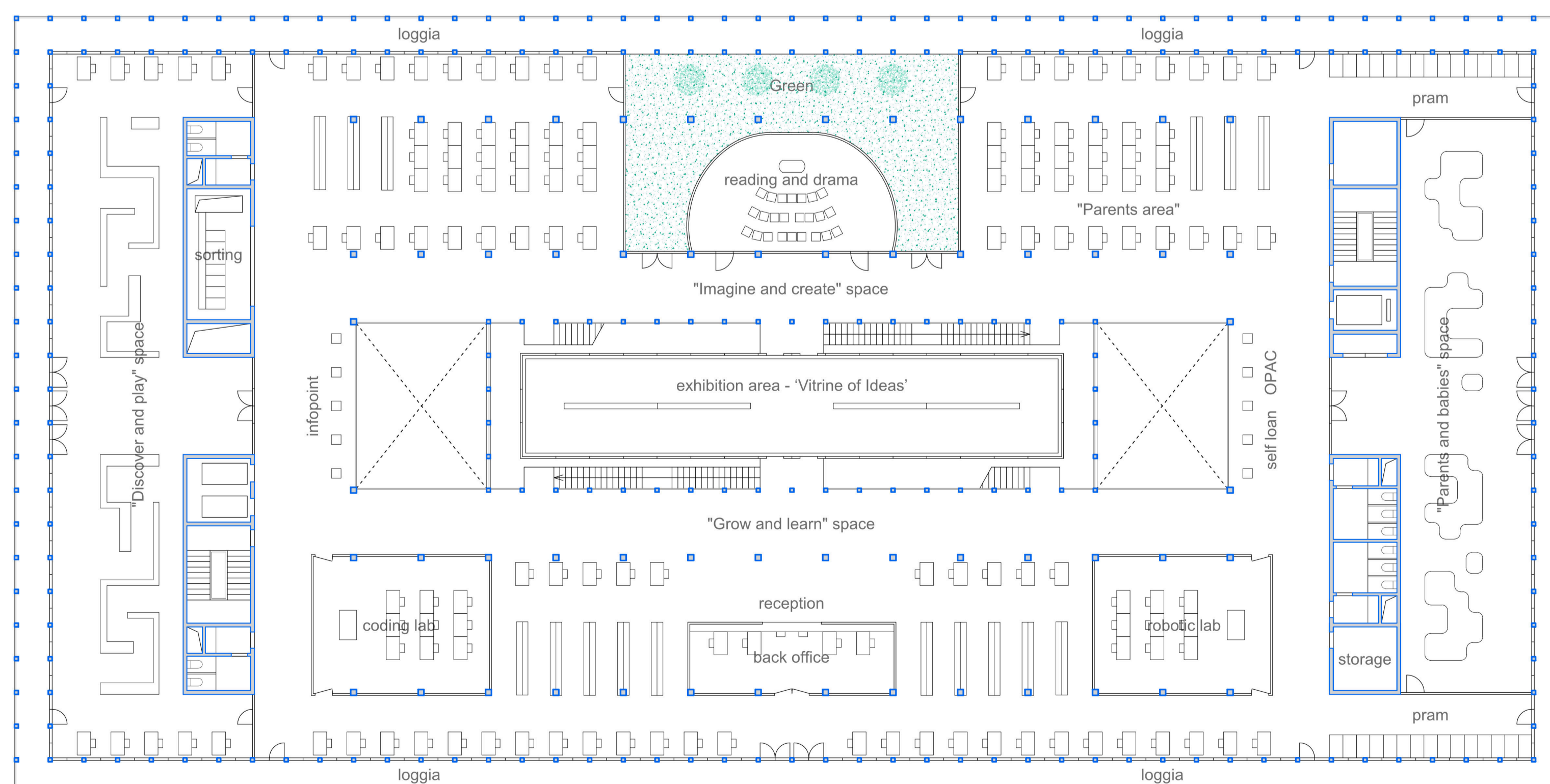
Perspective Reading Space in Third and Fourth Floor

From the interior, the facade material doesn't block the view of people, thus ensuring that the contact with the park is maintained at all times and taking advantage of the natural light in the reading rooms.



Elevation South 1:200

The translucent facade gives the skin a changing appearance depending on the time of the day. The panels glow gently in the sunlight, whereas at night, when the library is illuminated, they appear like a transparent veil. In addition, for the facade, "Candoglia Quarry" will be used to present the locality of Milan.



Second Floor - Imaginarium 1:200